

Slingsby



# The Young King

## Technical Specifications

**Further information please contact: Jodi Glass**

**Executive Producer, Slingsby**

Email [jodi@slingsby.net.au](mailto:jodi@slingsby.net.au)

Telephone +61 8 8231 3007

Cell/Mobile +61 (0)417 861 945

Skype slingsbytheatre

Office Suite 4, Level 1, 195 North Terrace, Adelaide SA 5000

Web [www.slingsby.net.au](http://www.slingsby.net.au)

# General Description

**The Young King** is a production designed for a studio or small proscenium arch venue, for children aged 8 and up and adults.

The main set consists of wood panelled walls and a fireplace to represent the Young King's chamber. Upstage of the fireplace several cut-out plywood trees stand in a group to represent a forest that is revealed in the final moments of the production (hidden behind the fireplace). An additional wood panelled bookshelf (which can be placed in various locations depending on the venue) contains small dioramas that the performers reference during the performance.

Please note: In addition to the main performance Slingsby curates an immersive pre-show entry pathway and area for the audience for audience engagement activities including crown making. The scale of the immersive pre-show experience is determined by the layout of each venue. Please discuss with Slingsby.

## Capacity

### **Standard Studio set-up - 140 seat capacity maximum**

Slingsby can provide 140 seats (including benches) as part of the production. See the example Technical Plan for a Studio set-up which shows the seating configuration (attached).

Capacity for a studio setting must be set at a **maximum of 140 seats** unless negotiated in writing directly with Slingsby **prior** to tickets going on sale.

### **Small Proscenium Arch Theatre set-up – 250 seat capacity maximum**

For larger venues – including small proscenium arch theatres – other configurations can be negotiated with Slingsby for a capacity of up to 250 seats. See the example Technical Plan for a Proscenium Arch venue set-up (attached).

## Venue

### **Performance Area**

The performance area must be a minimum of 11m wide x 15m deep x 4m high (36'1" wide x 49'3" deep x 13'1" high).

Performance area must be enclosed in black drape (except emergency egress points).

Note: The Presenter may need to provide approximately 35m (114'10") of pipe and drape at approximately 3m (9'10") high plus stage weights/sand bags to build 2 x dividing walls – see example floor plan attached.

### **Pre-show Area**

The pre-show areas are creatively reimagined to suit the individual layout of each venue. Please discuss with Slingsby.

## Duration

The performance runs for approximately 50 minutes. In addition the pre-show experience runs for 30 minutes prior to the advertised start time.

## Touring Company

Touring company of five (5) or six (6) people including the Director\*:

- 2 Actors
- 1 Musician
- 1 Production Manager/Stage Manager
- 1 Technical Manager/Operator
- 1 Director\*

**\*Please note:** the Director will attend the first week or two of longer tours with multiple seasons in multiple cities/towns. Therefore on longer tours, the touring company will comprise six (6) company members for the first part of the tour and five (5) company members thereafter.

## Rigging

**Presenter to provide:**

- 6 x 6m (20') bars at 4m (13') off the floor (as per floor plan)
- 1 x 4m (13') bar at 4m (13') off the floor (as per floor plan)

## Power

**Presenter to provide**

- Two (2) x 10 amp single-phase 240v (110v) outlets.
- Six (6) x Additional standard 240v (110v) outlets for domestic-style lamps in pre-show spaces.

Slingsby will provide

- All 240v power cables, tested and tagged to Australian Standards.
- Capability to convert to North American power with two (2) x Step Up Transformers (if required).

## Floor

Slingsby will provide

- Carpet in four sections to cover the acting surface.

## Set

**Presenter to provide:**

- 15 x 5kg (10lb) stage weights/shot bags (used to support the walls of the set).
- If required, 35m (114'10") of pipe and drape at approximately 3m high (9'10") plus stage weights/sand bags to build 2 x dividing walls - please discuss with Slingsby.

Slingsby will provide all set items comprising the following:

- Three (3) static walls of wood panelling, 2.4m wide x 3m high x 0.3m deep (7'10" wide x 9'10" high x 1' deep). These walls to be screwed to the floor or weighted with shot bags to be provided by the Presenter.
- Two (2) moveable walls upstage of the Fireplace, 3m x 3m (9'10" x 9'10").
- One (1) fireplace: 3m wide x 2m high by 1.2m deep (9'10" wide x 6'7" high x 3'11" deep) at the base of the hearth.
- Eight (8) freestanding plywood trees approximately 2.4m wide x 2.4m high x 0.6m deep (7'10" wide x 7'10" high x 2') to create a forest for the final image.
- One (1) small table.

## Effects

### **Presenter to provide**

- One (1) x DMX controllable smoke machine with fluid.

## Lighting Control/Operation

Slingsby will provide:

- MacBook Pro with a DMX converter box running VISTA.

## Production Lights

### **Presenter to provide:**

- One (1) x 650w Profile Spot plus 3m (9'10") high Boom Stand.

Slingsby will provide:

- All other lighting for the production.

Slingsby will provide a lighting plan for the production.

## Live Music

### **Presenter to provide:**

- Upright Piano (Yamaha U3 or similar), tuned.

## Sound Control

Slingsby will provide

- MacBook Pro running QLab.

# Speakers & Sound

## **For all international seasons (performances outside Australia):**

### **Presenter to provide:**

- 2 x JBL EON 15" powered speakers (or similar) with stands
- 2 x JBL EON 8" powered speakers (or similar) with stands
- Appropriate power & signal cables to run back to Ops Desk

## **For all Australian seasons only (performances within Australia):**

### Slingsby will provide:

- 2 x JBL EON 15" powered speakers with stands
- 6-Way USB Sound Card/Audio Interface
- 2 x JBL EON 8" powered speakers with stands
- Appropriate power & signal cables
- 6-Way USB Sound Card/Audio Interface

# Other Equipment

### **Presenter to provide:**

- 1 x high-powered vacuum cleaner available throughout the season.

Please note: the carpet in the performance space must be vacuumed after each performance.

# Dressing Rooms

### **Presenter to provide**

- 2 x dressing rooms (one male, one female).
- Refrigerator.
- Sink for dishwashing.
- Access to the Internet and telephone facilities for the Touring Company.

# Wardrobe

### **Presenter to provide:**

- 1 x washing machine.
- 1 x dryer.
- 1 x drying cabinet/hanging space.
- Iron and ironing board.

Please note: Wardrobe facilities must be available to the Touring Production/Stage Manager at least one (1) hour prior to each performance and two (2) hours after each performance.

## Front of House Staff

### **Presenter to provide:**

- Four (4) front of house staff who are willing to wear costume elements (includes hats, braces and bow tie) and are comfortable to learn and perform a simple script (comprising a few lines of text).

Please note: Slingsby will provide the scripts in advance of the season for the FOH staff to learn and will conduct a FOG briefing for FOH staff prior to the first performance as part of the load-in schedule.

Ideally there will be continuity in FOH staff rostering.

## Load-In and Load-Out Times and Schedule

Load-In: eight (8) hours

Load-out: four (4) hours

Slingsby will provide a detailed load-in and load-out schedule as part of the venue negotiations.

## Load-In and Load-Out Crew

### **Presenter to provide:**

Load-in Local Crew: minimum of five (5) multi-skilled technicians.

If departmentalised:

- 1 x Venue Tech @ 8hrs
- 1 x General Hand or Mechanist @ 4hrs
- 2 x Lighting @ 4hrs
- 1 x Sound @ 2hrs

Load-out Local Crew: a minimum of five (5) multi-skilled technicians.

If departmentalised:

- 1 x Venue Tech @ 4hrs
- 2 x Lighting @ 4hrs
- 1 x General Hand or Mechanist @ 4hrs
- 1 x Sound @ 1hr

Please note: All Slingsby touring production staff work in hands-on roles.

If for any reason (such as house rules) Slingsby staff are not permitted to work directly on load-in, the load-in will take longer than the hours specified above. This must be discussed with Slingsby as part of venue negotiations and prior to confirmation of load-in and performance schedules.

Please contact Slingsby to discuss your specific venue requirements.

## Freight

The production's touring equipment, seating, props and costumes pack into five (5) roadcases on wheels. Dimensions and volume of the touring roadcases will be provided separately.

**Presenter to provide clear, direct access for roadcases into the venue.**

Doorways must be of sufficient width and height to allow roadcases through.

The presenter must provide a suitable location to store the roadcases during the season, hidden from the audience and not obstructing access/egress from the set.

**Please note:** due to their weight and size the roadcases cannot be moved up stairs and cannot be lifted or carried by people power alone. Therefore the venue stage cannot be accessible by stairs only; it is essential that the venue stage is accessible by a lift or by direct access from loading dock.

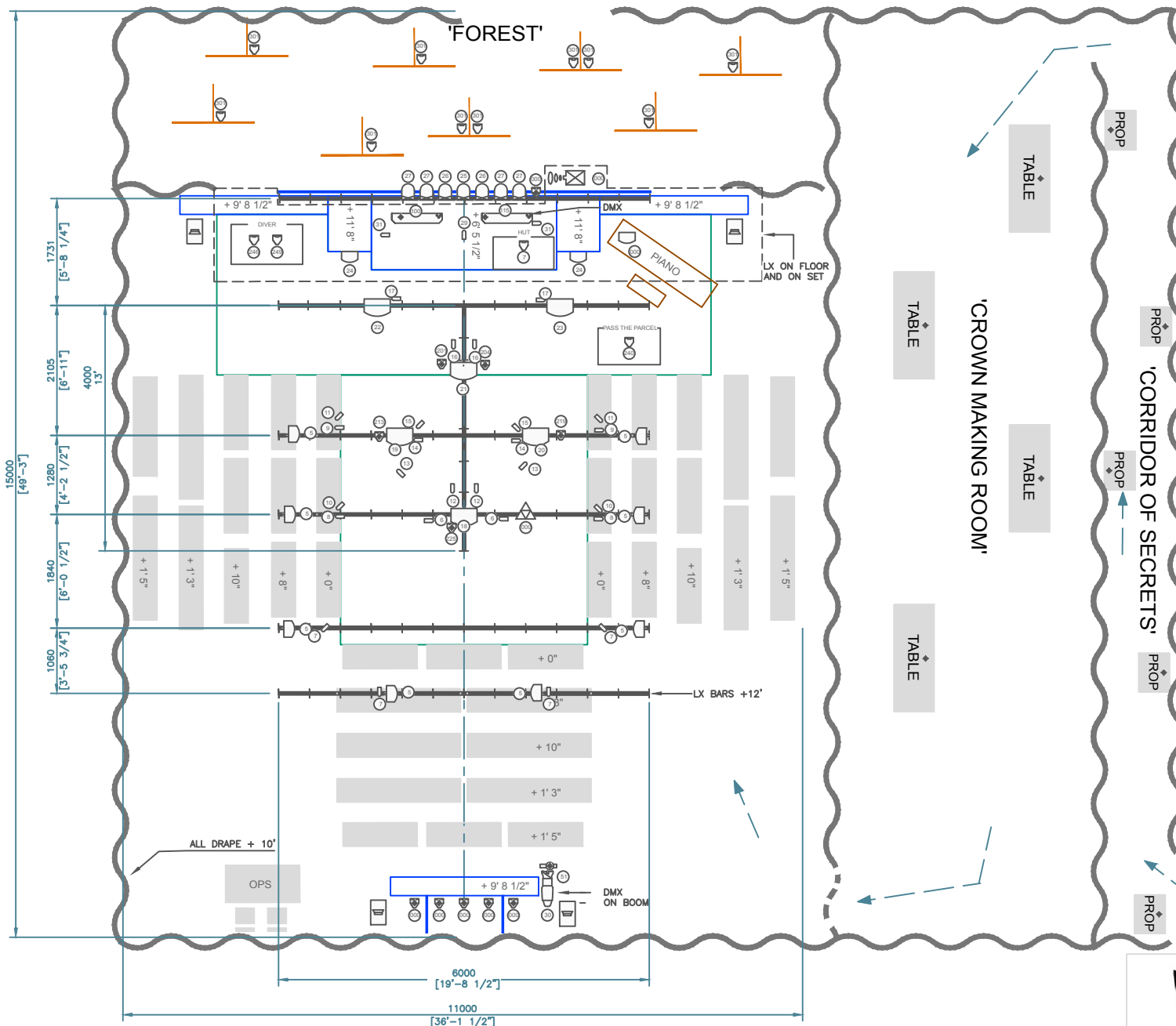
## Touring Company Transportation

Transportation arrangements for the Touring Company must be negotiated and agreed in writing with Slingsby's Executive Producer as part of the contracts for each season and tour.

Please also refer to the following documents:

- Pre-Show description.
- FOH and Latecomers description.

Watch the pre-show video and full-length performance video – ask Slingsby for links.



- Shade @ 40w
- Houselights @ 40w
- Astera AX-3
- Pinpoint
- Hot Power
- Light Instr USITT LED Cyc
- Par 16 @ 50w
- ETC CE Source-4 Zoom15°-30° @ 575w
- Light Acc USITT External Moving Mirror
- DMX Controlled Smoke Machine
- Water Effect
- Powered Speaker

**LEGEND**

- CARPET
- SET
- BENCH
- DRAPES
- TREE

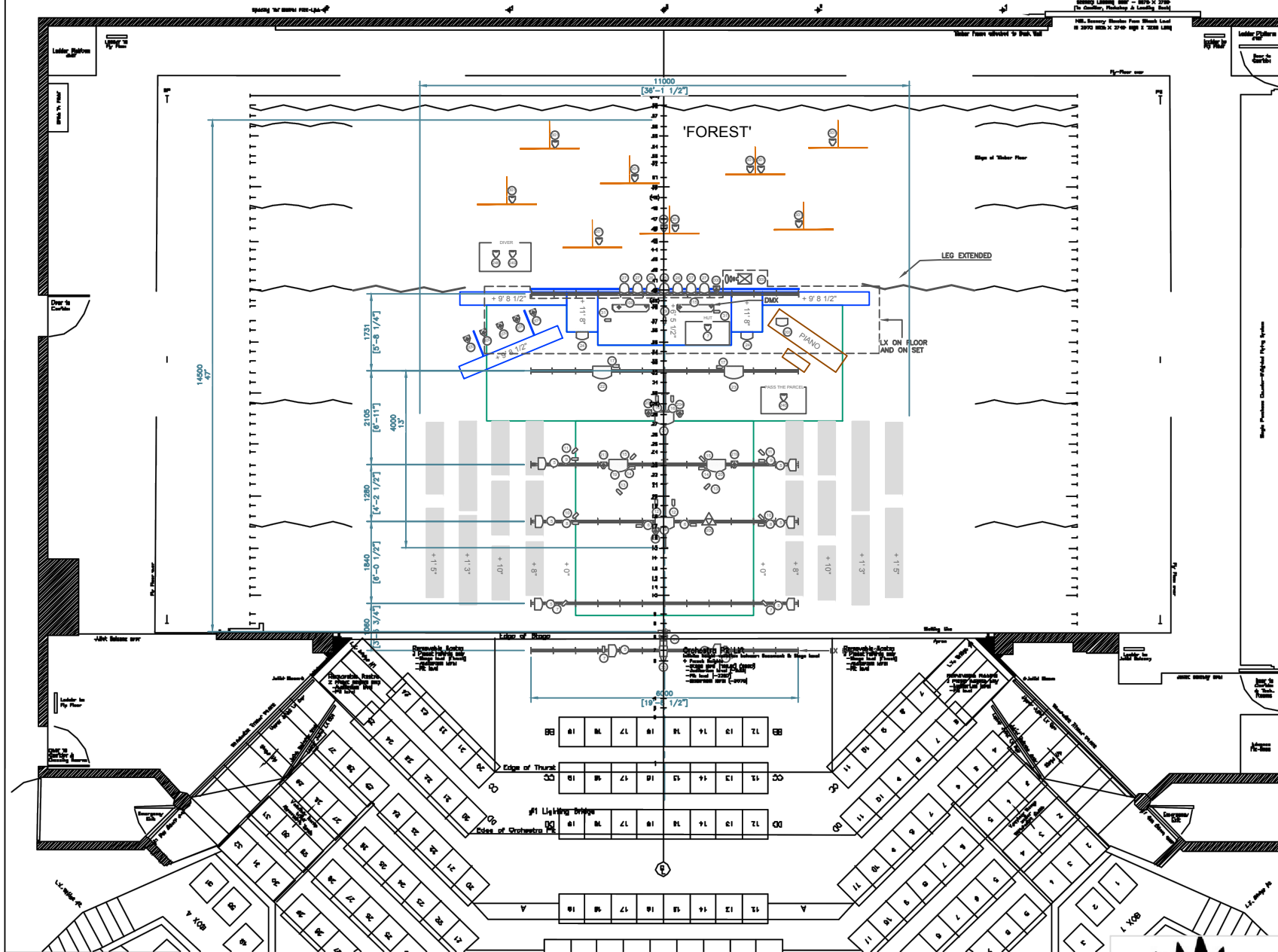


**SLINGSBY**  
- Journey In Wonder -



Production:	THE YOUNG KING
Drawing Name:	TYK IN STUDIO ARR. 1/8" = 1'0" @ A4
Venue:	PROMENADE HALL
Date Drawn:	24/10/2016
Drawn By:	RP - roland@slingsby.com.au
Scale:	1/8" = 1'0" @ A4





- Shade @ 40w
- Houselights @ 40w
- Astera AX-3
- Pinspot
- Hot Power
- Light Instr USITT LED Cyc
- Par 16 @ 50w
- ETC CE Source-4 Zoom15°-30° @ 575w
- Light Acc USITT External Moving Mirror
- DMX Controlled Smoke Machine
- Water Effect

**LEGEND**

- CARPET
- SET
- BENCH
- TREE



# SLINGSBY

- Journey In Wonder -



Production:	THE YOUNG KING
Drawing Name:	TYK IN PROS ARCH ARR. 3/32" = 1'0" @ A4
Venue:	DUNSTAN PLAYHOUSE
Date Drawn:	24/10/2016
Drawn By:	RP - roland@slingsby.com.au
Scale:	3/32" = 1'0" @ A4